

City of Lakewood Zoning Districts

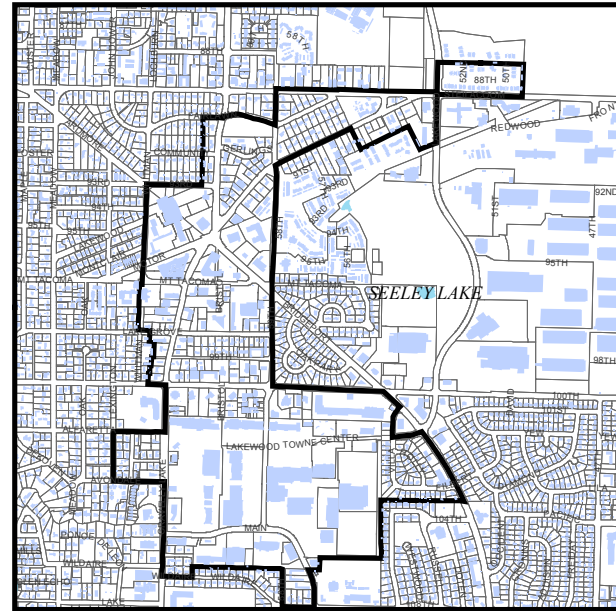
This product was prepared with great care by City of Lakewood Department of Finance and Information Systems GIS. City of Lakewood expressly disclaims any liability for any inaccuracies which may yet be present.

Adopted by the City Council under Ord #264
20th day of August, 2001
Effective Date: September 1, 2001

Amended by the City Council under Ord #266 the 19th day of November, 2001
Amended by the City Council under Ord #293 the 2nd day of December 2002
Amended by the City Council under Ord #322 & #323 the 17th day of November 2003
Amended by the City Council under Ord #357 the 1st day of November 2004
Amended by the City Council under Ord #397 the 7th day of November 2005
Amended by the City Council under Ord #425 the 18th day of September 2006
Amended by the City Council under Ord #462 the 3rd day of December 2007
Amended by the City Council under Ord #483 the 15th day of December 2008
Amended by the City Council under Ord #500 the 21st day of September 2009
Amended by the City Council under Ord #521 the 8th day of October 2010
Amended by the City Council under Ord #539 the 15th day of August 2011

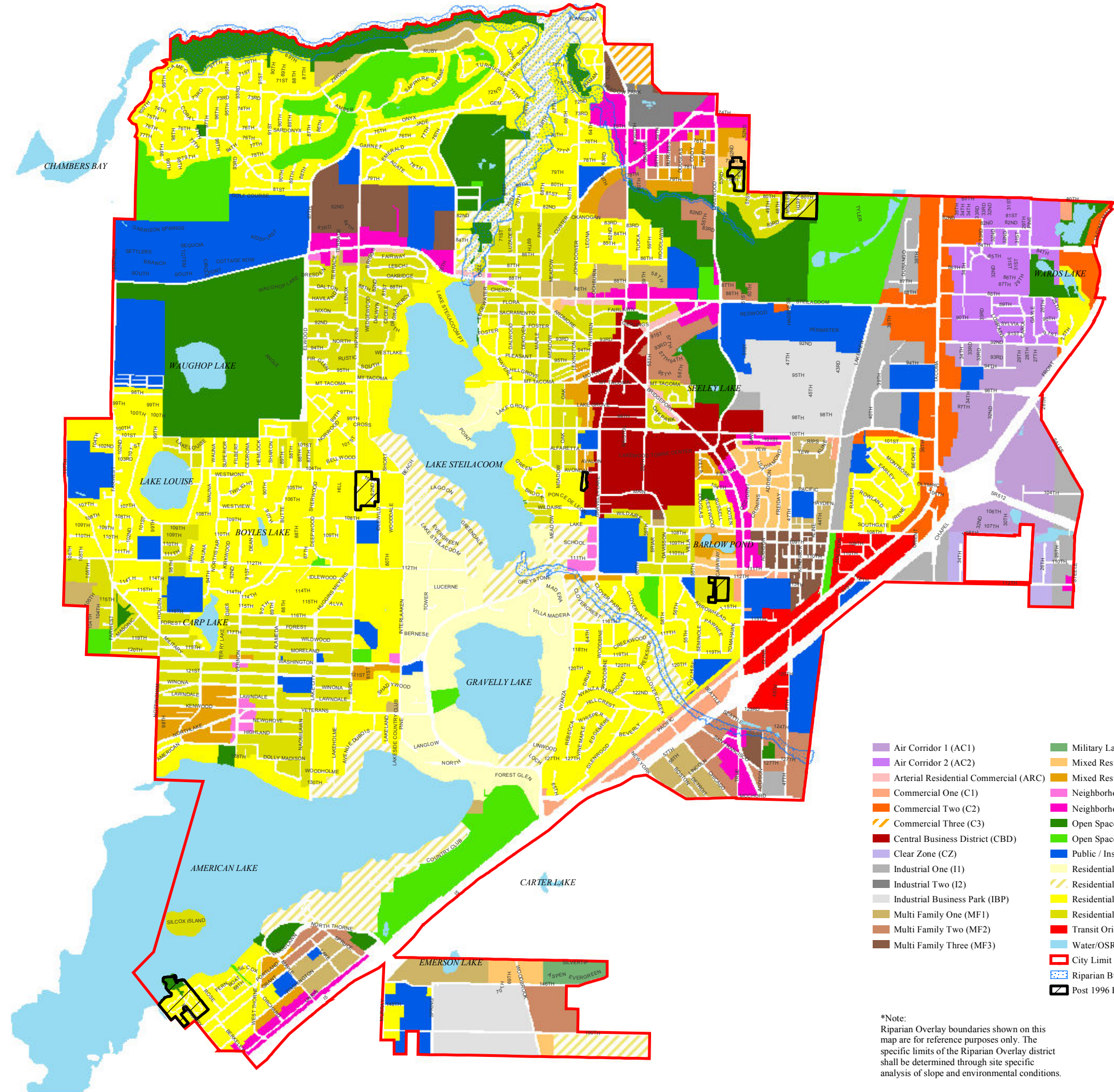
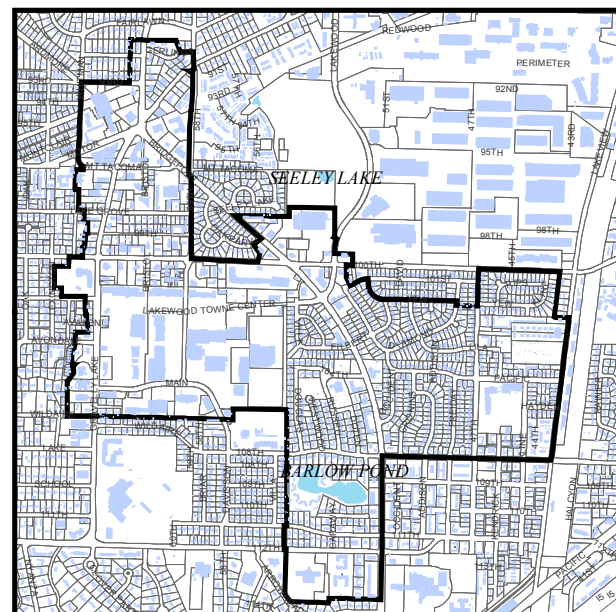
Tax Incentive Urban Use Center (LMC, Chapter 3.64) Ord #286 Nov 4, 2002

Amended by the City Council under Ord #383 May 2, 2005



Senior Housing Overlay (LMC, Section 18A.40.300) Ord #264 Sept 1, 2001

Amended by the City Council under Ord #264 Sept 1, 2001



- | | |
|---|--------------------------------------|
| ■ Air Corridor 1 (AC1) | ■ Military Lands (ML) |
| ■ Air Corridor 2 (AC2) | ■ Mixed Residential One (MR1) |
| ■ Arterial Residential Commercial (ARC) | ■ Mixed Residential Two (MR2) |
| ■ Commercial One (C1) | ■ Neighborhood Commercial (NC1) |
| ■ Commercial Two (C2) | ■ Neighborhood Commercial (NC2) |
| ■ Commercial Three (C3) | ■ Open Space & Recreation One (OSR1) |
| ■ Central Business District (CBD) | ■ Open Space & Recreation Two (OSR2) |
| ■ Clear Zone (CZ) | ■ Public / Institutional (PI) |
| ■ Industrial One (I1) | ■ Residential One (R1) |
| ■ Industrial Two (I2) | ■ Residential Two (R2) |
| ■ Industrial Business Park (IBP) | ■ Residential Three (R3) |
| ■ Multi Family One (MF1) | ■ Residential Four (R4) |
| ■ Multi Family Two (MF2) | ■ Transit Oriented Commercial (TOC) |
| ■ Multi Family Three (MF3) | ■ Water/OSR1 |
| | ■ City Limit |
| | ■ Riparian Buffer |
| | ■ Post 1996 PDD's |

*Note:
Riparian Overlay boundaries shown on this map are for reference purposes only. The specific limits of the Riparian Overlay district shall be determined through site specific analysis of slope and environmental conditions.